



IPERION HS

# Integrating Platforms for the European Research Infrastructure ON Heritage Science

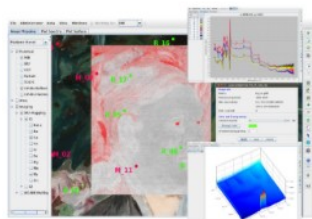


- ❑ 23 countries
- ❑ 67 organisations
- ❑ Catalogue of services



## ARCHLAB

archives, reference collections and expert competencies



## DIGILAB

digital scientific datasets for heritage science



## FIXLAB

large-scale facilities and advanced laboratories



## MOLAB

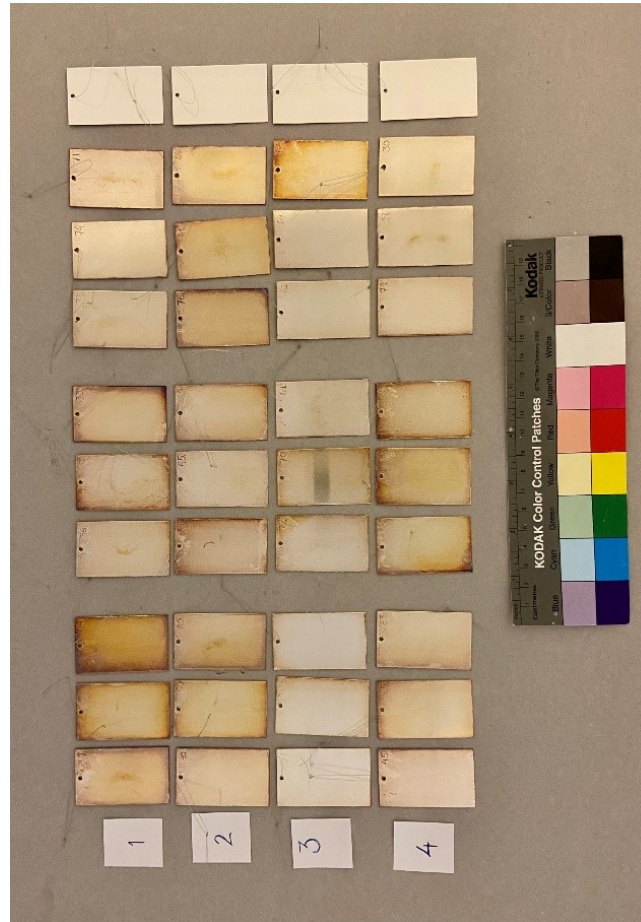
mobile laboratory for *in-situ* diagnostics

# Laser-assisted removal of lacquer from silver alloy objects; investigation for optimum parameters and assessment of the result

*Charlotta Bylund Melin, Nationalmuseum and Stavroula Golfomitsou, University of Gothenburg*



Gilded silver cup  
by Hans Reiff,  
Nürnberg 1609  
(NMK 205/131) in  
the  
Nationalmuseum  
collection. Photo:  
Viktor Fordell,  
Nationalmuseum



IPERION HS

Tarnished silver coupons  
awaiting to be varnished.  
University of Gothenburg,  
Department of Conservation





# Meaningful materials in the khipu code: a multi-modal analysis

*Lucrezia Milillo, University of St Andrews and Marei Hacke, Swedish National Heritage Board*



IPERION HS



Lucrezia Milillo studying the morphological features of a khipu.

Photo: <https://lucreziamilillo.com>

Khipu from the collection of the Museums of World Culture, Gothenburg, Sweden. 1932.08.0001